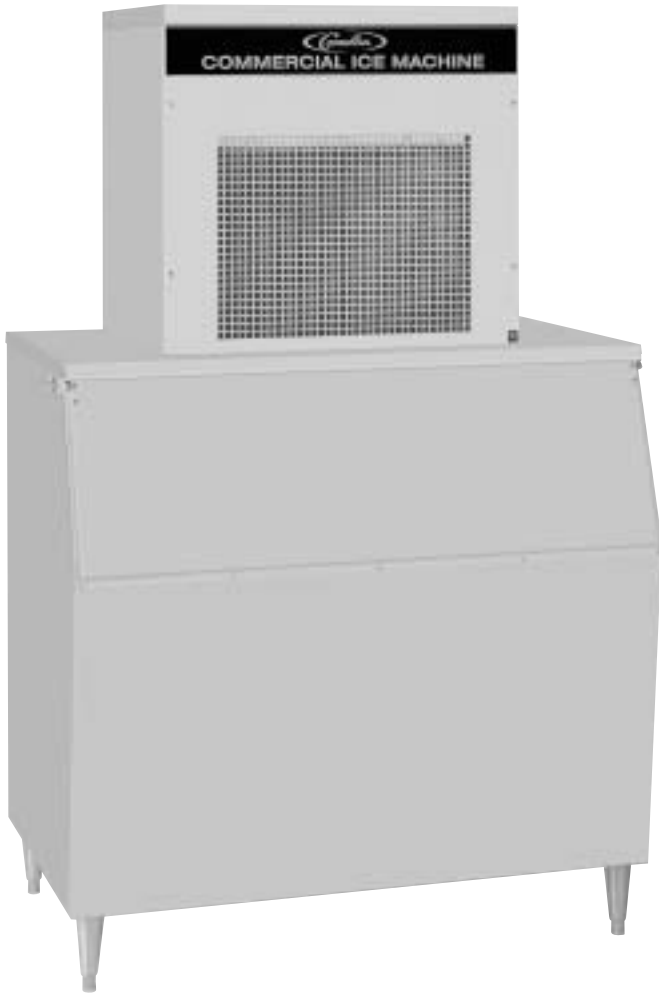




WCF-2200 Ice Maker

Continuous Flaker Ice Maker



Features:

- Ideal flaked ice for the display of fine foods and salad bars
- CFC-free, R-404A refrigerant
- Ice maker uses 100% of water
- Compact, only 30" wide

OPTIONS:

- Air cooled, water cooled, or remote cooled
- Water inlet kit
- Storage bins



WCF-2200 Ice Maker

Technical Specifications:

Compressor: 2 H.P.

Refrigerant: CFC-Free, R-404A

Voltage: 208-230/60, 220-240/50

Minimum Circuit Amps: 25

Ice Production Capacity (60 cycle):

2280 lbs. per day @ 70°F Air/50°F Water
(1035 kg @ 21.09°C Air/10.0°C Water)

(50 cycle is 1915 lbs. (869 kg) per day)

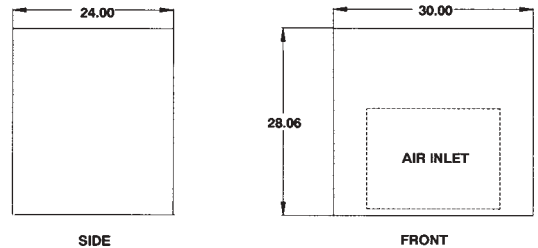
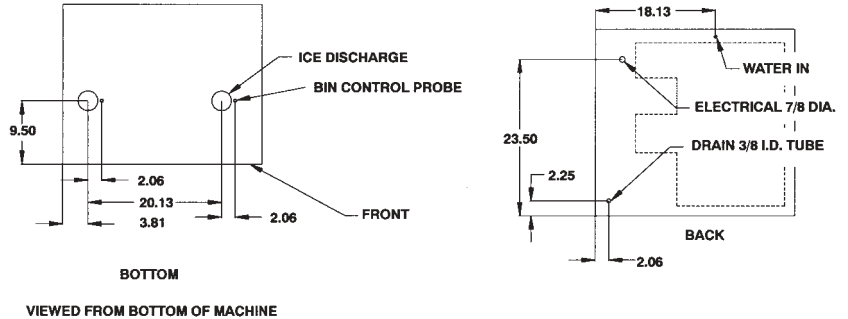
Cabinet Construction: Stainless steel

Dimensions:

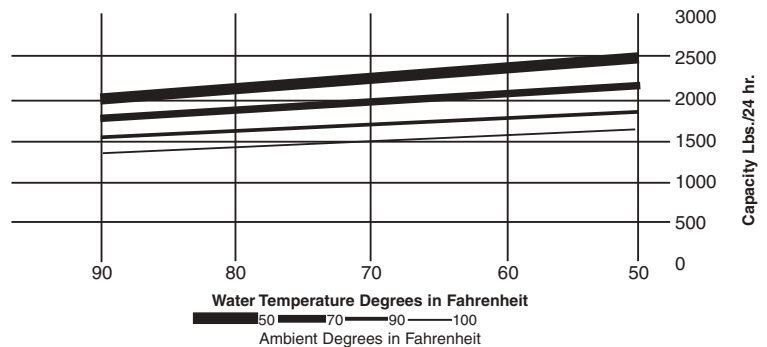
30" (76.2 cm) wide
24" (60.96 cm) deep
28" (71.12 cm) high

Shipping Weight: 342 lbs. (155 kg)

Agency Listings:



Ice making capacities



Part No.	Model No	Standard Electrical	Condenser	Production 70°/50° lbs/kgs	Shipping Weight lbs/kgs	Operating Weight lbs/kgs	Voltage Range
569200082	WCF-2201A	208-230/60/1	Air	2280 lbs./1035 kgs.	342 lbs./155 kgs.	317 lbs./144 kgs.	198-253
569200335	WCF-2202A	220-240/50/1	Air	1915 lbs./869 kgs.	342 lbs./155 kgs.	317 lbs./144 kgs.	209-264
569200337	WCF-2201W	208-230/60/1	Water	2280 lbs./1035 kgs.	342 lbs./155 kgs.	317 lbs./144 kgs.	198-253
569200339	WCF-2201R*	208-230/60/1	Remote	2280 lbs./1035 kgs.	342 lbs./155 kgs.	317 lbs./144 kgs.	198-253

* WCF-2201R Remote requires CR1200 condenser and line set.



For more information or to place an order, contact your sales representative or authorized distributor.

In the US

Phone 800-238-3600
Fax 800-258-0255

Outside the US

Phone 763-421-6120
Fax 763-422-3297