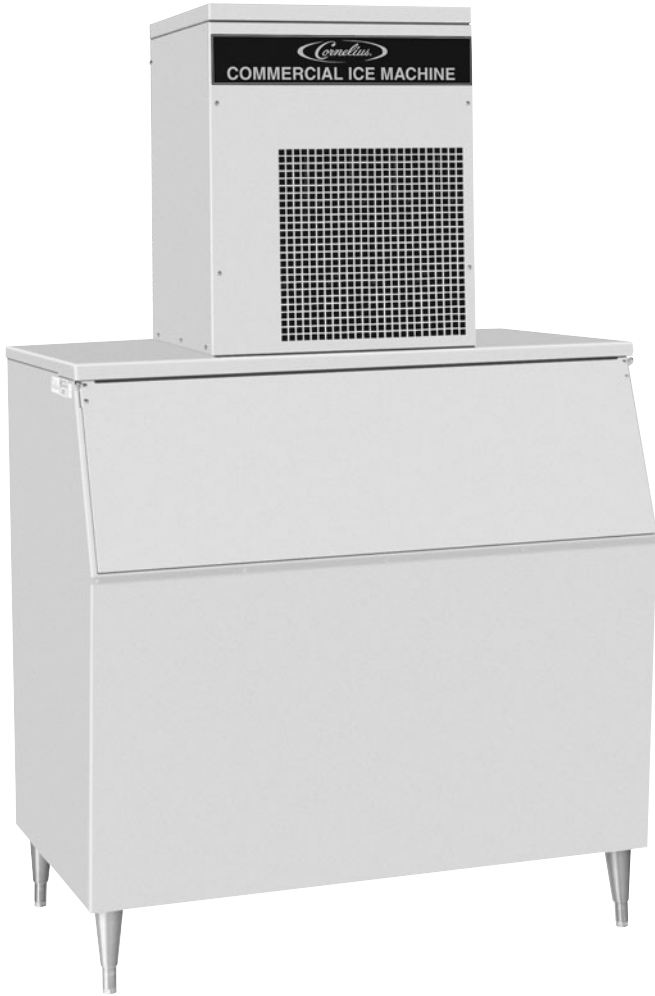




# WCF-1100

## Continuous Flaker Ice Maker



### Features:

- Ideal flaked ice for the display of fine foods and salad bars
- CFC-free, R-404A refrigerant
- Ice maker uses 100% of water
- High capacity model, only 22" wide

### OPTIONS:

- Air cooled, water cooled, or remote cooled
- Water inlet kit
- Storage bins



# WCF-1100 Ice Maker

## Technical Specifications:

**Compressor:** 1 H.P.

**Refrigerant:** CFC-Free, R-404A

**Voltage:** 208-230/60, 220-240/50

**Minimum Circuit Amps:** 15

## Ice Production Capacity (60 cycle):

1426 lbs. per day @ 70°F Air/50°F Water  
(646.31 kg @ 21.09°C Air/10.0°C Water)

(50 cycle is 1184 lbs. (537.05 kg) per day)

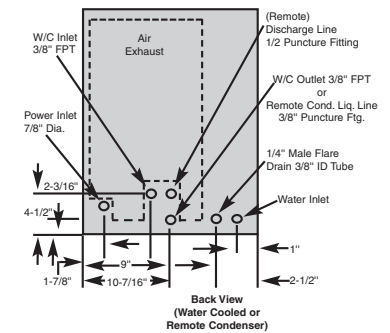
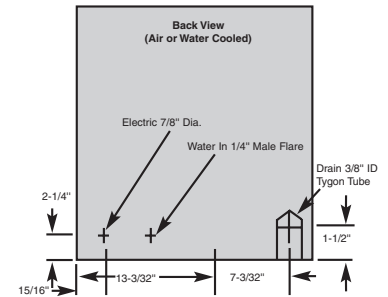
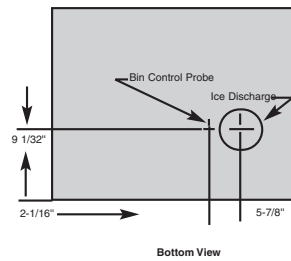
**Cabinet Construction:** Stainless steel

## Dimensions:

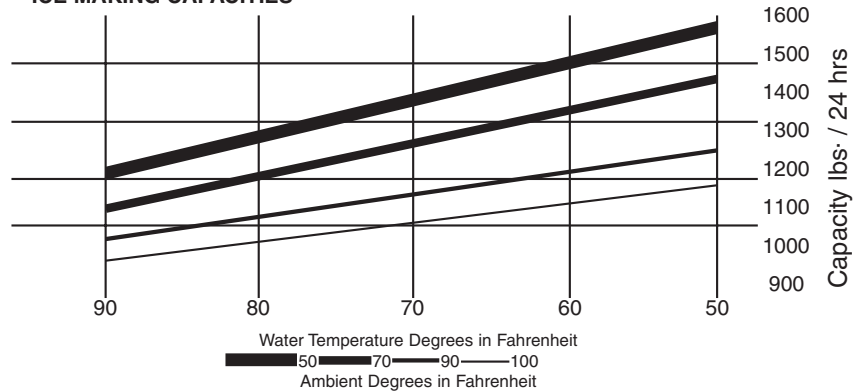
22" (55.88 cm) wide  
24" (60.96 cm) deep  
27" (68.58 cm) high

**Shipping Weight:** 210 lbs. (95.25 kg)

## Agency Listings



ICE MAKING CAPACITIES



Part No.	Model No	Standard Electrical	Condenser	Production 70°/50° lbs/kgs	Shipping Weight lbs/kgs	Operating Weight lbs/kgs	Voltage Range
569200013	WCF-1101A	208-230/60/1	Air	1426 lbs/648 kgs	210 lbs/95 kgs	190/87	198-253V
569200014	WCF-1101W	208-230/60/1	Water	1426 lbs/648 kgs	210 lbs/95 kgs	190/87	198-253V
569200017	WCF-1101R*	208-230/60/1	Remote	1426 lbs/648 kgs	210 lbs/95 kgs	190/87	198-253V
569200015	WCF-1102A	220-240V/50/1	Air	1184 lbs/537 kgs	210 lbs/95 kgs	190/87	209-264V

\*WCF-1101R Remote requires WC1 condenser & line set



For more information or to place an order, contact your sales representative or authorized distributor.

**In the US:**  
Phone: 1-800-238-3600  
Fax: 1-800-535-4235  
**Outside the US:**  
Phone: 1-763-421-6120  
Fax: 1-763-422-3297